

Gm Dm x3

Fretboard mutes ad lib

Ebmaj7 Dm7

Cm7 Fsus4 Gsus4

THE STONE ROSES: Love Spreads - complete version

♩ = 92

Intro (D7#9)

Gtr. 1

w/slide

† = lift slide

# Crossroads

## Intro

$J=106$

N.C.

N.C.

1/4

1/4

1/4

lay back

E7#9

Guitar

A7

P H P  $\frac{1}{4}$

E B G D A E

2 0 2 (2) 0 2 0

2 0 2 0 2 0

2 0 2 0 2 0

2 0 2 0 2 0

3 0 3 0 3 0

[illegible]

VERSE 1

I went down.

VERSE 1

I went down—

$\text{♩} = 93$

N.C.

A<sup>5</sup>

let ring

T  
A  
B

5 5 5 5 5 5 5 5 4 4 4 4 4 4 4 4 | 2 2 2 2 BU 0 3 (5)

3 3 3 3 3 3 3 3 2 2 2 2 2 2 2 2 | 0 0 0 BU 0 3 (5)

N.C.

1. 2.

0:05

T  
A  
B

2 5 E 4 1 2 1 2 1 2 1 4 0 2 0 2 0 2 3 2 5

V V V V V V V V V V V V V V V

3.

F#5 E5 F#5 E5 F#5

T  
A  
B

2 1 2 1 2 1 4 2 4 2 4 2 4 2 E A E A E A E A

## RED HOT CHILI PEPPERS: Scar Tissue - intro

**CD TRACK 9**

♩ = 89

*Intro*

F C Dm C

let ring throughout

The musical score for the Intro of 'The Sound of Silence' is written for guitar. It begins with a tempo marking of quarter note = 89. The key signature has one flat (Bb), and the time signature is 4/4. The melody is written on a single staff with a treble clef. Chords F, C, Dm, and C are indicated above the staff. The instruction 'let ring throughout' is written below the staff. Below the staff are two lines of fret numbers for the left hand. The first line contains fret numbers 14, 14, 14, 14, 9, 9, 10, 10, 10, 10, 10, 10, 9. The second line contains fret numbers 13, 13, 13, 13, 8, 8, 10, 10, 10, 10, 10, 8. A bar line is placed between the 9th and 10th fret numbers in both lines.

[illegible]

**Queen BOHEMIAN RHAPSODY**

ed Zeppelin: Immigrant Song - main riff

TRACK

♩=114

N.C.

x7

A

0:19

E

A<sup>5</sup>

N.C.

x5

A

E

A

N.C.

'stone cold crazy' right channel... continued

H

H

MU

H

8,16

G5

Bb5

G5

ISE: Plug In Baby - Intro

TRACK 23

♩=136

F#

G

H P

D

H P

BU

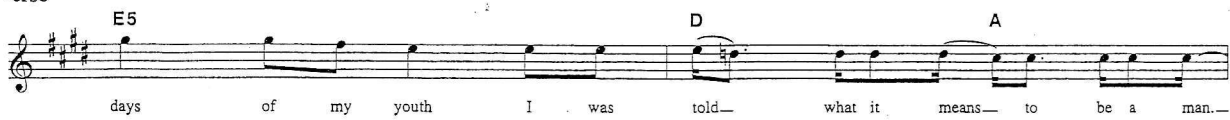
F#

G

P



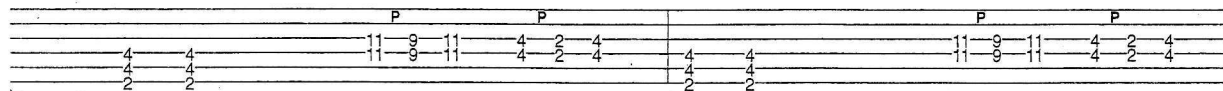
Verse



0:13

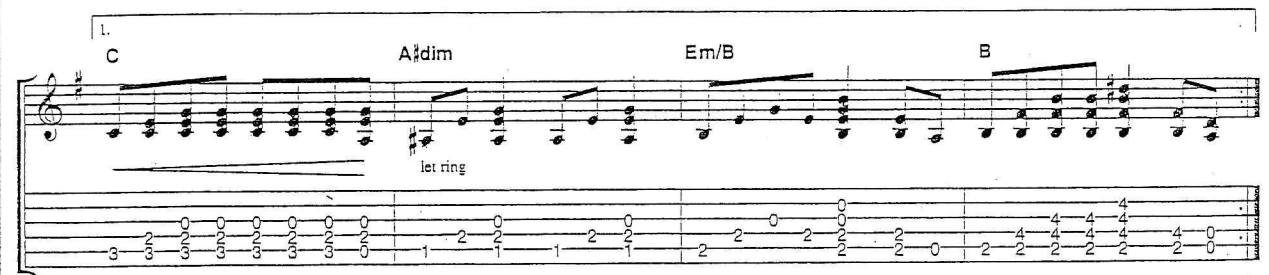
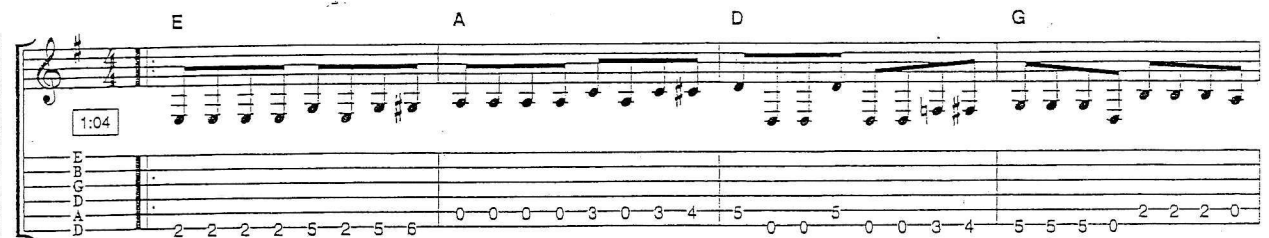


0:56

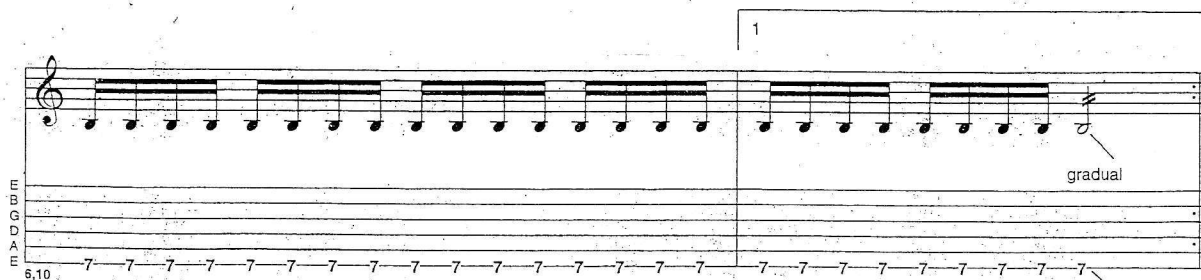
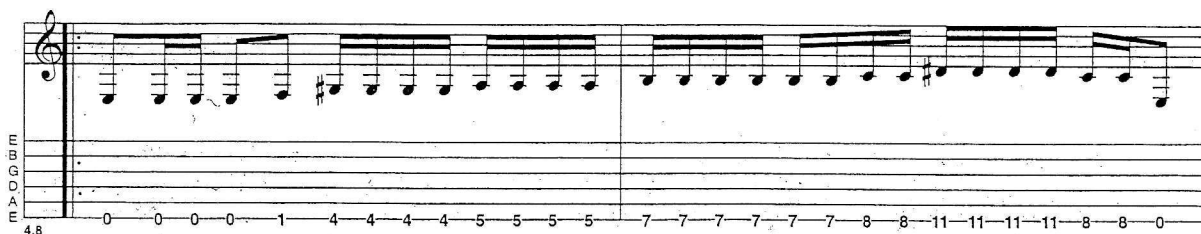


## MUSE: New Born - rock riff

TRACK 21



## DICK DALE: MISERLOU



Am Am7/G D/F# F E

Am7 Am7/G D/F# F E

FLEETWOOD MAC: Oh Well - original riff

♩ = 213 E5

Pantera

Cowboys From E

♩ = 111 N.C. Play 3 times

BRITN' N'ZAZZ: The Boys Are Back In Town (main riff)

A Bm9 A/C# Bm/E

# **INBALL WIZARD THE WHO**

**Bm/F#**      **Bmadd11/F#**      **F#7sus4**

Guitar 1 - Acoustic

**F#7**      **F#m7**      **Gmaj7/F#**

**Em/G**      **F#**      **F#7**

**Bsus4**      **B**

**Auto-Harp Gtr. Strum Alive**

PM

# **Mike Oldfield TUBULAR BELLS**

Am

♩=144

8

N.C.

PO PO MU— H PO PO PO MU— MU— MU—

2 3 4 2 3 2 0 2 0 2 3 2 0 2 0 2 0 2 2 2 2 2 X 0

E5 B

11

H PO PO PO MU— H PO PO PO MU— MU— MU—

2 3 2 0 2 0 2 3 2 0 2 0 2 0 2 2 2 2 2 X

B A

F#5 etc

STEVIE WONDER: Superstition - main riff

CD TRACK 8

♩ = 101

Ebm7

Gr. 1

Gr. 2 (Gr. 1 cont. sim.)

5-7 5-7 7-5-7-X 5-5-X-5-7 5-7 5-7 5-7-5-7

3 8 7-9 3 8 7-9 X

THE SENGHORSES: Love Is The Law

CD TRACK 20

[B] A

♩ = 86

Capo 2nd fret

P P

5-4-0 0-3-0 0-2-0 0-3-0 3-2-0 0-2-2 2-2 2-2

0 0 0 0 0 0 0 0

[F#] E

Led Zeppelin: Trampled Underfoot - main riff

TRACK 15

♩ = 110

N.C. (G7)

ad. lib. on repeats

x6 Bb7 C7

3 2 3 2 3 5 3 3 5 7 6 6 8 8

10 10 10 11 12 10 10 12 2 3 2 3 5 3 3 5

N.C. (G7) N.C. (G7) x6

† 2<sup>nd</sup> time only

0:00 ♩ = 146  
With distortion

Gtr1+2  
arr for 1 gtr

Let ring

GT  
TAB

Em9 (fade in) F#m/5 fill Em9

(Let ring)

gliss

F#m/11

sim X4

S

13,17,21

F#m/E Em N.C. F#m/E E11

THE POLICE: Message In A Bottle

CD TRACK 15

Guitar 2 C5add9 A5add9 B5add9 F#m

S

Guitar 1

S

RE STRAITS: Money For Nothing

CD TRACK 19

♩ = 132

G5 Bb5 G5 Bb5 C5 Bb5 G5

let ring

H 6 P S

C5 Bb5 G5 F5 G5

NH

P P



# ERIC CLAPTON GOCAINE

♩ = 105 E5 D5 E5 D5 E5 D5 E5 D5

Arranged for one guitar  
E Mixolydian

E5 D5 E5 D5

E5 D5 E5 D5 E5 D5 E5 D5

## CHIC: Le Freak - main riff

CD TRACK 1

♩ = 115 Am7 D C

## THE NOTORIOUS B.I.G.: Sweet Child O' Mine

CD TRACK 16

♩ = 120 (D) (C) (G) (D)